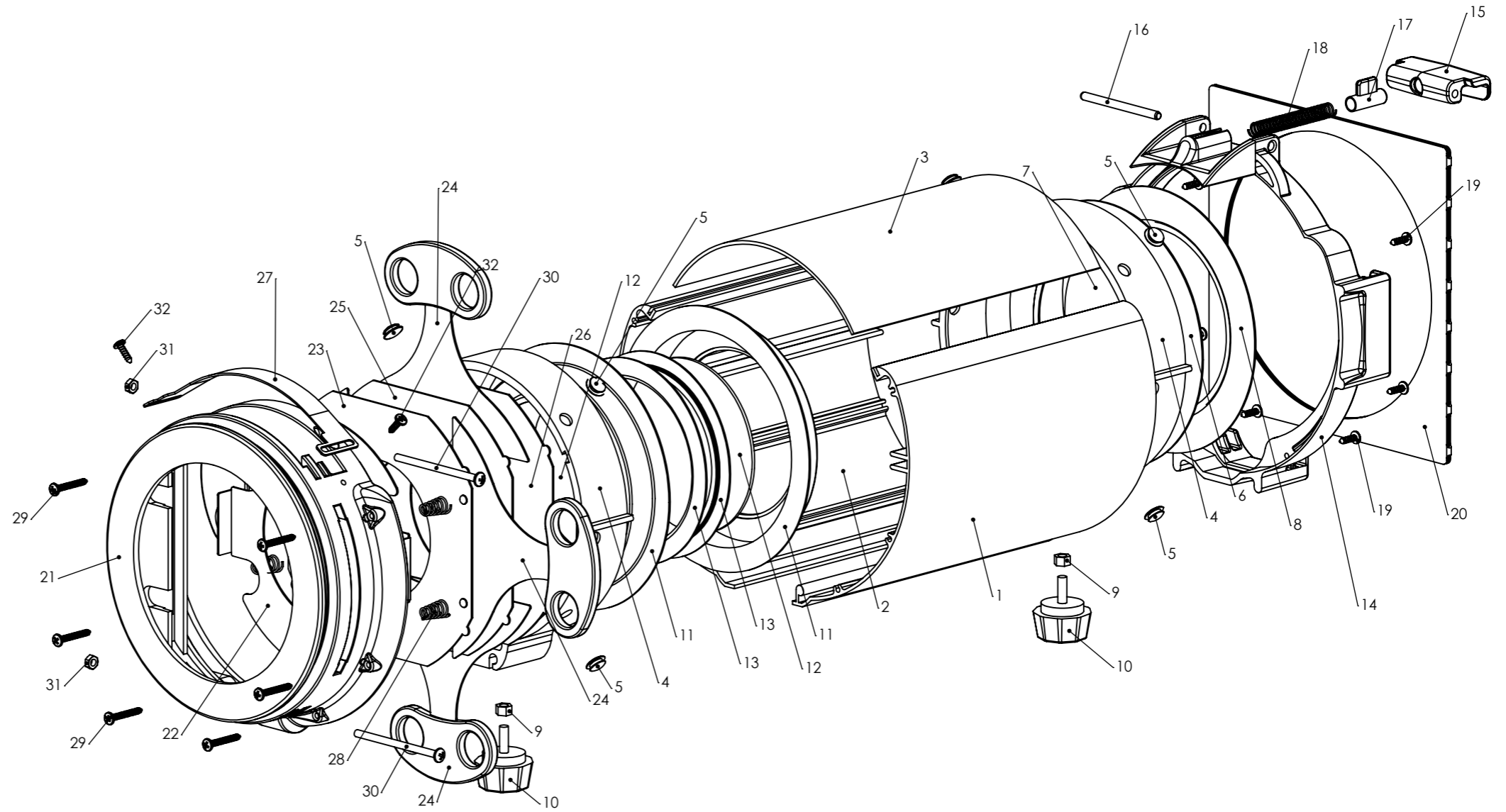


BOM Table		
ITEM NO.	PART NUMBER	QTY.
1	PACEXT002 (45-75) Extrusion lens tube right	1
2	PACEXT001 (45-75) Extrusion lens tube left	1
3	PACEXT003 (45-75) Extrusion lens tube top	1
4	PACPLA029 Lens holder	2
5	PACPLA036 Rubber Plug	8
6	PACSPIN015 Front lens spinning	1
7	PACLEN006 Front lens	1
8	PACSPIN012 Front lens spinning	1
9	M5 Hex nut	2
10	COMPLA001 Lens focus knob	2
11	PACSPIN013 Rear lens spinning	2
12	PACLEN012 Rear lens	2
13	PACSPIN014 Rear lens spinning	2
14	PACPLA013 Lens tube front moulding	1
15	PACPLA006 Colour frame locking clip	1
16	M5 x 60 Steel roll pin	1
17	PACPLA007 Colour frame plunger	1
18	ACCSPR001 Colour frame plunger spring	1
19	Screw (Type 2)	6
20	20CFSF12 Colour Frame	1
21	PACPLA031 Lens tube rear moulding	1
22	PACSHT026 Lens tube baffle	1
23	PACSHT001 Shutter plate rear	1
24	PACSH Shutter blade	4
25	PACSHT004 Shutter plate midfixed	1
26	PACSHT002 Shutter plate front	1
27	PACSHT025 Gobo holder slot cover	1
28	PACSPR001 Shutter spring	4
29	Screw (Type 3)	6
30	Screw (Type 1)	2
31	M4 Hex nut black	2
32	Screw (Type 4)	2



REV	DATE	BY	MODIFICATIONS

Selecon

www.seleconlight.com
 19-21 Kawana St, Northcote,
 Auckland 0627, New Zealand

APPLICABLE STANDARD:
 DRAWN TO NZS/AS 1100

TOLERANCE EXCEPT WHERE
 OTHERWISE STATED:
 X ± 0.5
 X.X ± 0.1
 X.XX ± 0.05
 ANGLES ± 0.5°

DIMENSIONS IN mm
 DO NOT SCALE

MATERIAL:

FINISH:

VOLUME:

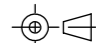
MASS:

TITLE:
Pacific 45° - 75° Zoom

SIZE: **A3** PART NO: **XXXX** REV

SCALE: NTS FILE: Pacific 45°-75° Zoom.sldrw Sheet 1 of 1

Modeled: Drawn: **1/01/2008** Checked:
 By: By: - Approved:

DRAWN IN THIRD ANGLE PROJECTION  **© COPYRIGHT 2008**
 This drawing remains the property of SELECON